

— I'LL BE —
MOTHER



DEDICATED TO CREATING MEANINGFUL PLACES THAT
MEMORABLY BRING US TOGETHER



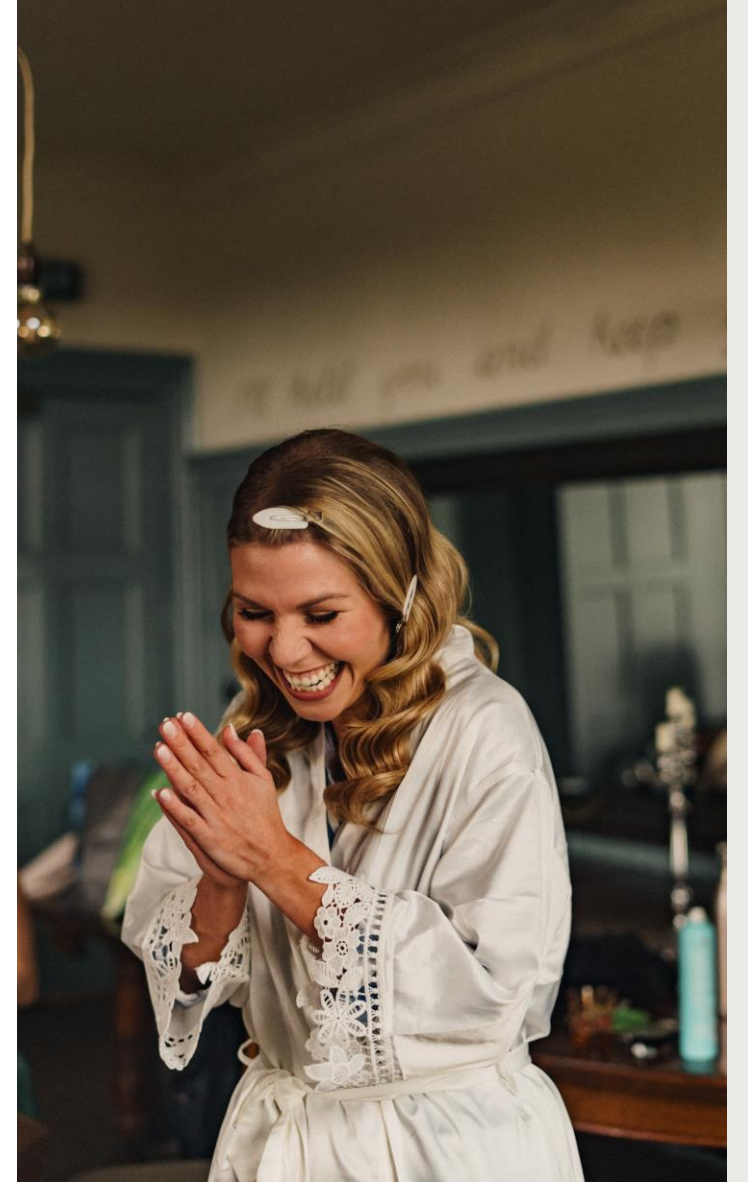
INTRODUCTION

In our family, we know that what really matters goes beyond the fuss and frills of colour schemes and centrepieces. The moments we treasure, and value forever are the ones we share with friends and family.

Each of our three homes in the I'll be Mother family have something slightly different to offer; what doesn't change is our commitment to helping you celebrate your wedding with our warm and generous style.

An Arts & Craft era country house; an English vineyard and a glass and wooden structure set within an ancient woodland, at Mother Love we have a venue to suit every taste and requirement.

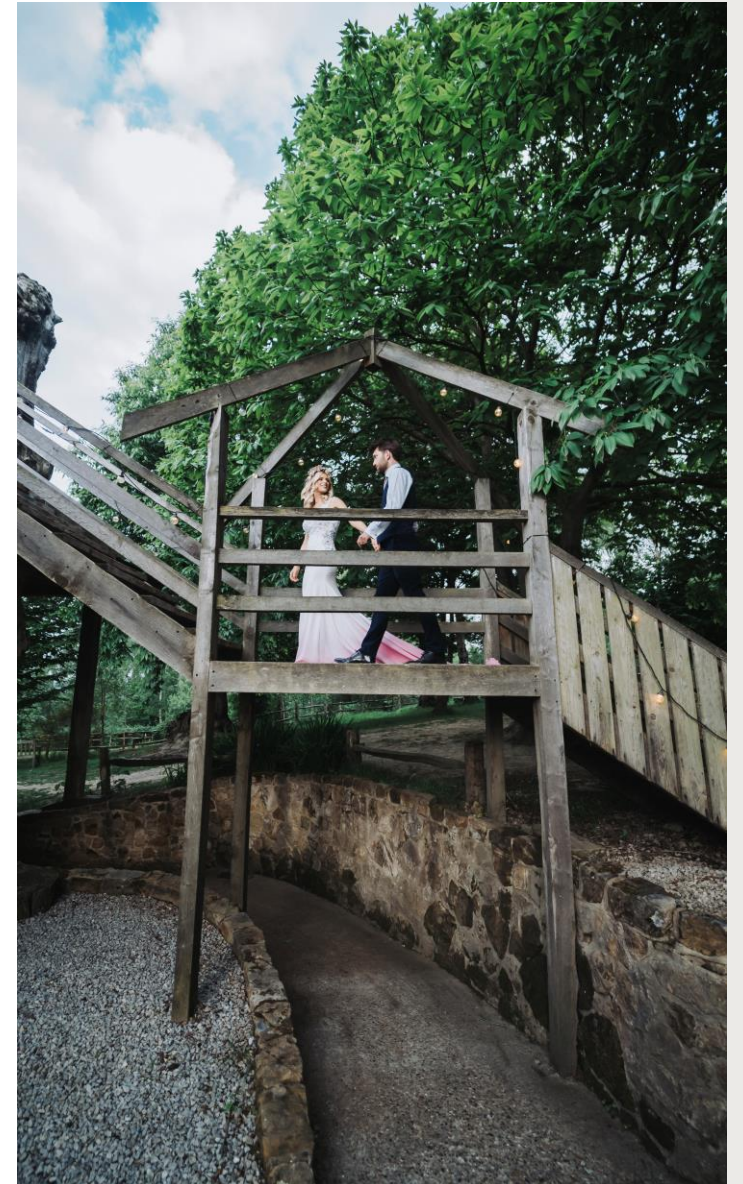
I'LL HOLD
YOU





AND KEEP
YOU SAFE

HELPING
YOU
GROW





SO, YOU
CAN BE
YOUR
BEST



THE BEACON

GARDEN KITCHEN









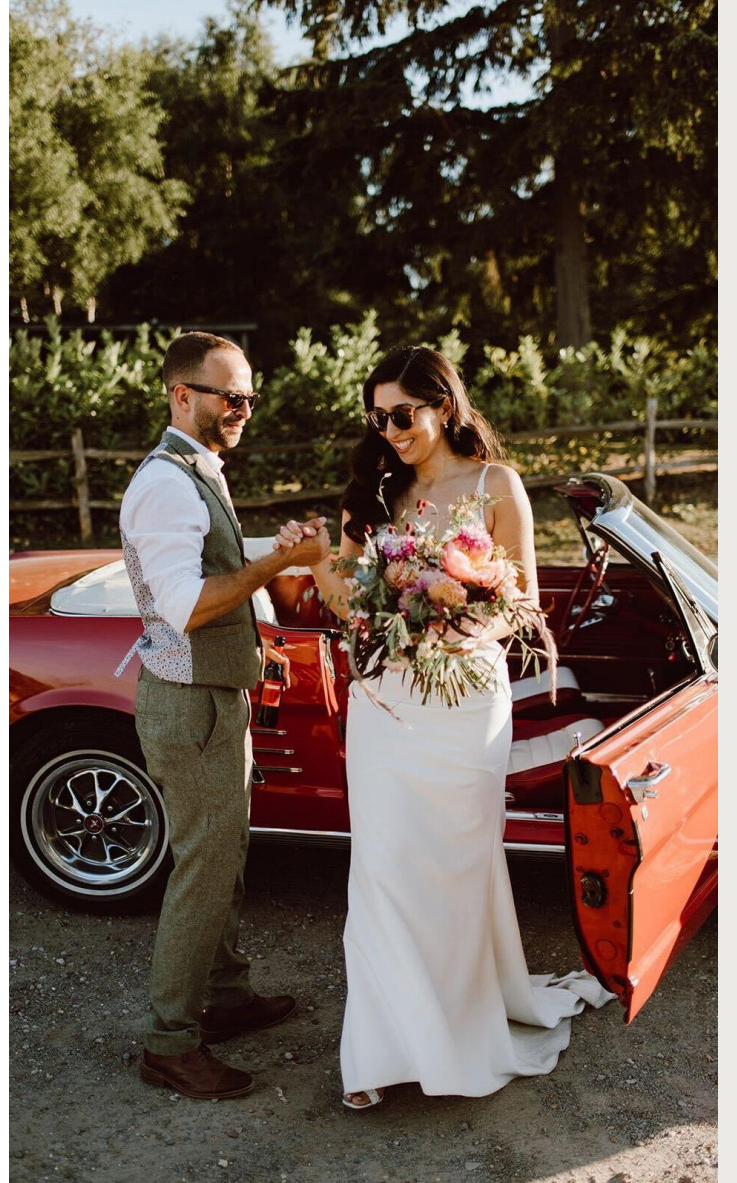






KINGDOM

WOODLAND KITCHEN







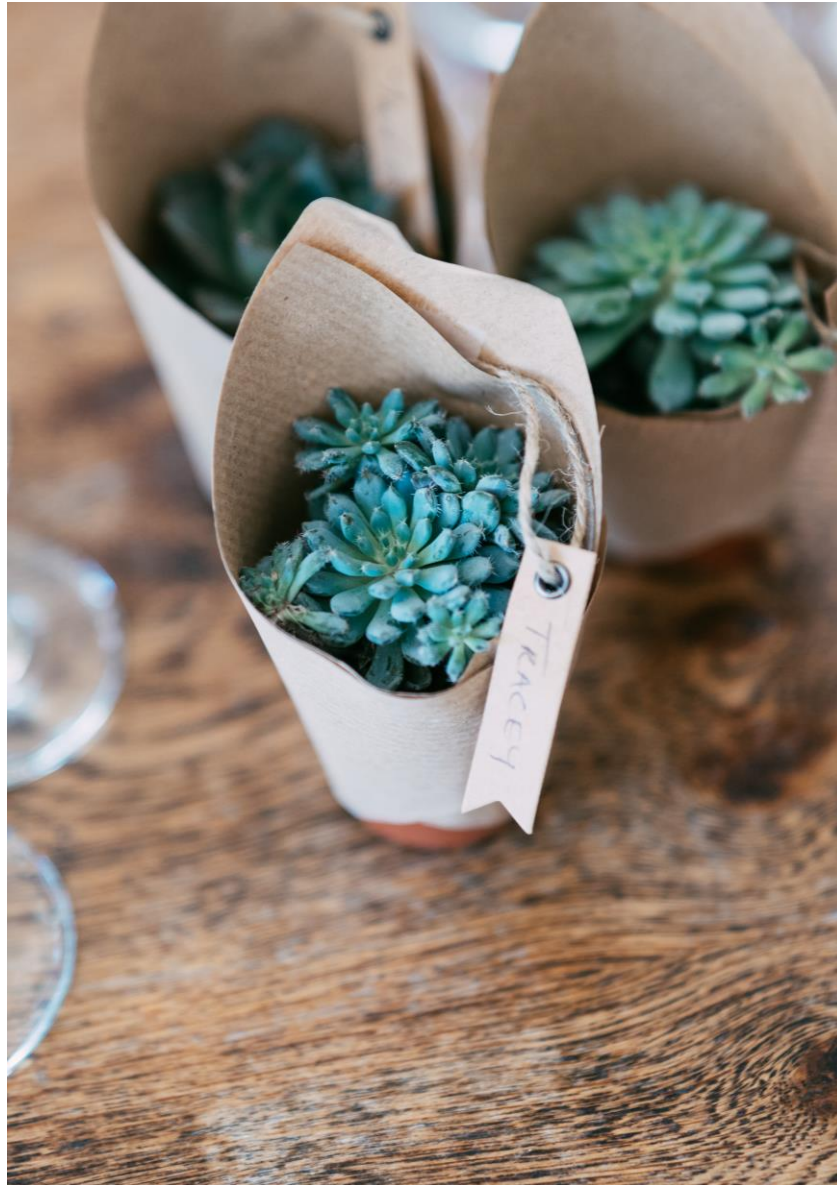






THE
SWAN

WINE KITCHEN

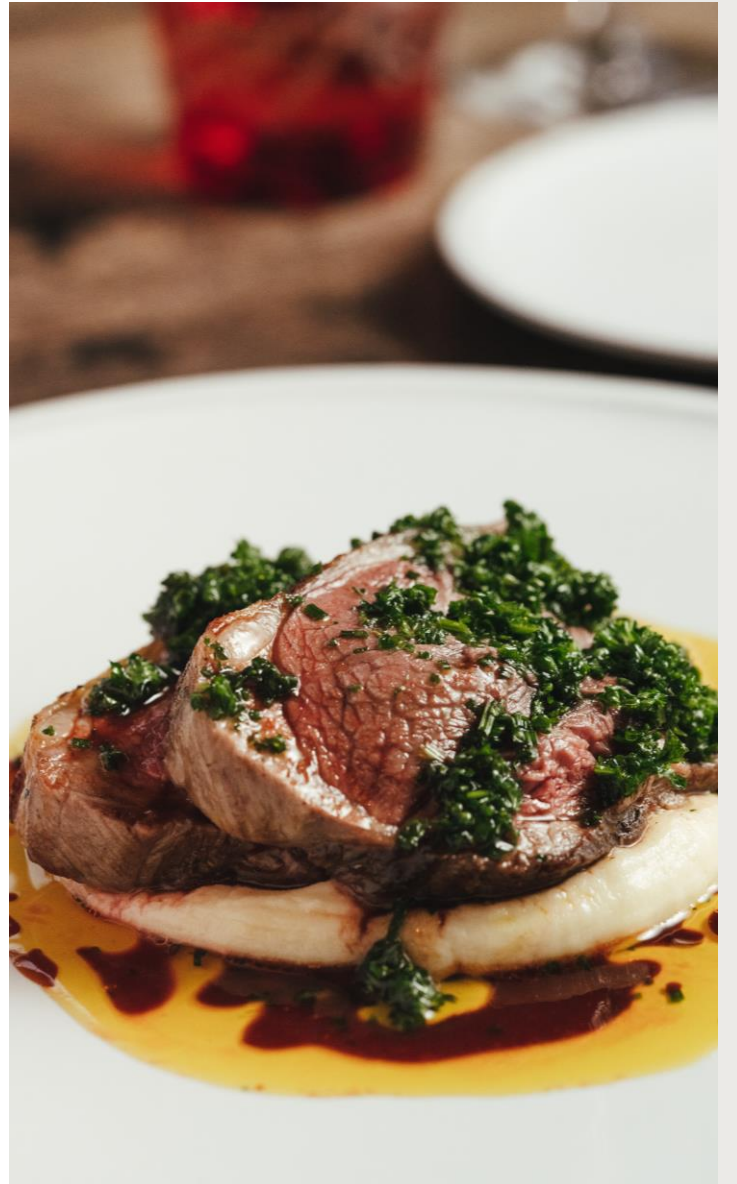




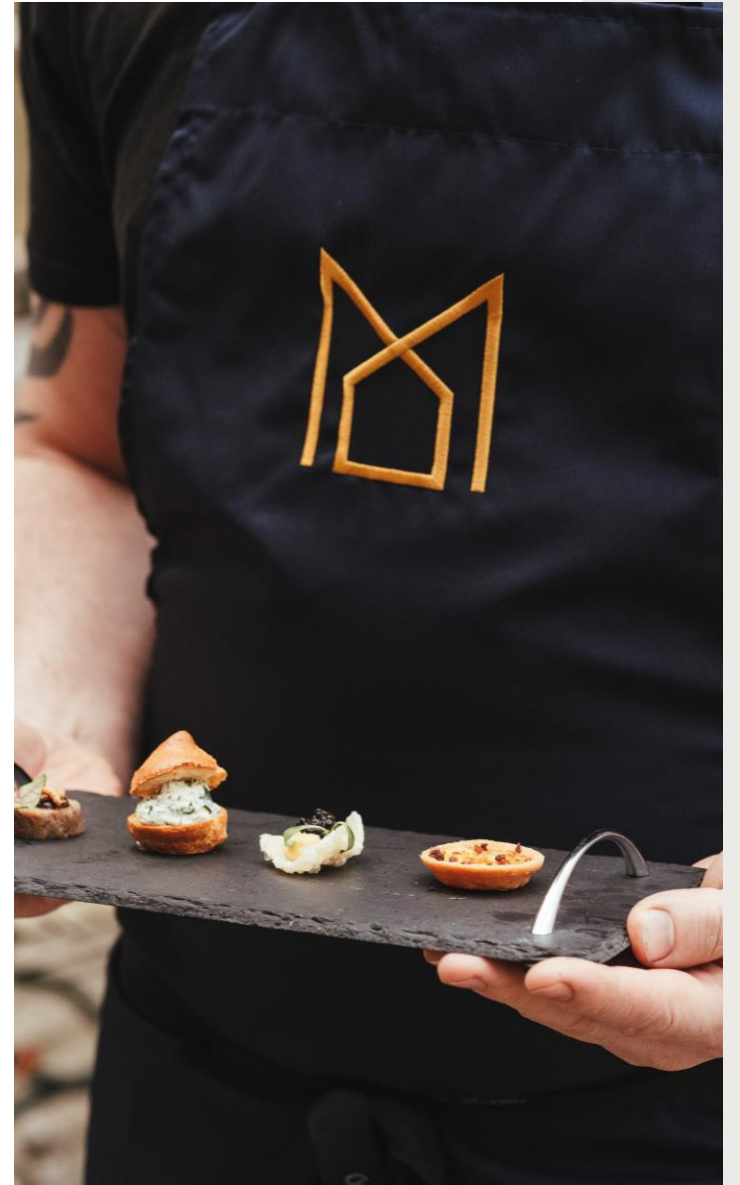














THE ONLY THING THAT MATTERS IS
EVERYTHING
ASK YOUR MOTHER

www.mother-love.co.uk

ido@mother-love.co.uk

01892 519882